

Strong form

$$\frac{\partial T}{\partial t} = \frac{\partial}{\partial x} \left( \kappa(x) \frac{\partial T}{\partial x} \right) + s(x)$$

Strong form

$$\frac{\partial T}{\partial t} = \frac{\partial}{\partial x} \left( \kappa(x) \frac{\partial T}{\partial x} \right) + s(x)$$

$$T(x) \approx [N_1(x) \quad N_2(x)] \begin{bmatrix} T_1 \\ T_2 \end{bmatrix} = \mathbf{N}\mathbf{T}$$

Strong form

$$\frac{\partial T}{\partial t} = \frac{\partial}{\partial x} \left( \kappa(x) \frac{\partial T}{\partial x} \right) + s(x)$$

$$T(x) \approx [N_1(x) \quad N_2(x)] \begin{bmatrix} T_1 \\ T_2 \end{bmatrix} = \mathbf{N}\mathbf{T}$$

$$\frac{\partial}{\partial t} \left( [N_1(x) \quad N_2(x)] \begin{bmatrix} T_1 \\ T_2 \end{bmatrix} \right) - \frac{\partial}{\partial x} \left( \kappa(x) \frac{\partial}{\partial x} \left( [N_1(x) \quad N_2(x)] \begin{bmatrix} T_1 \\ T_2 \end{bmatrix} \right) \right) - s(x) = R,$$

Strong form

$$\frac{\partial T}{\partial t} = \frac{\partial}{\partial x} \left( \kappa(x) \frac{\partial T}{\partial x} \right) + s(x)$$

$$T(x) \approx [N_1(x) \quad N_2(x)] \begin{bmatrix} T_1 \\ T_2 \end{bmatrix} = \mathbf{N}\mathbf{T}$$

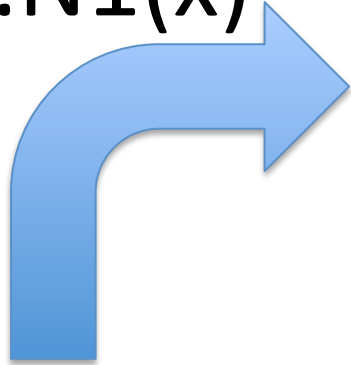
$$\frac{\partial}{\partial t} \left( [N_1(x) \quad N_2(x)] \begin{bmatrix} T_1 \\ T_2 \end{bmatrix} \right) - \frac{\partial}{\partial x} \left( \kappa(x) \frac{\partial}{\partial x} \left( [N_1(x) \quad N_2(x)] \begin{bmatrix} T_1 \\ T_2 \end{bmatrix} \right) \right) - s(x) = R,$$

Weak form

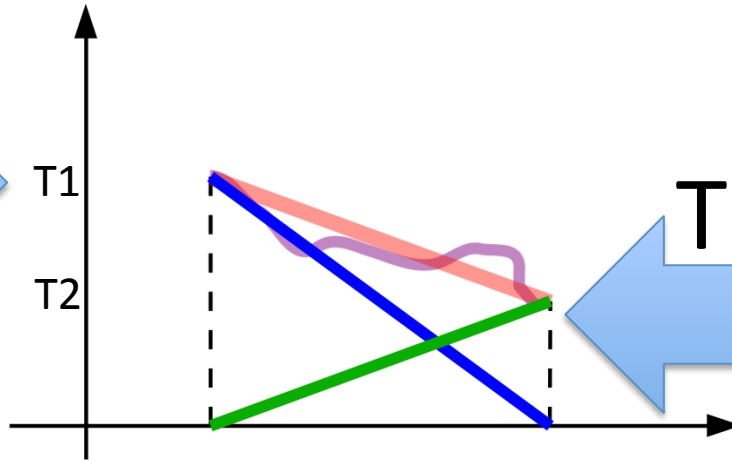
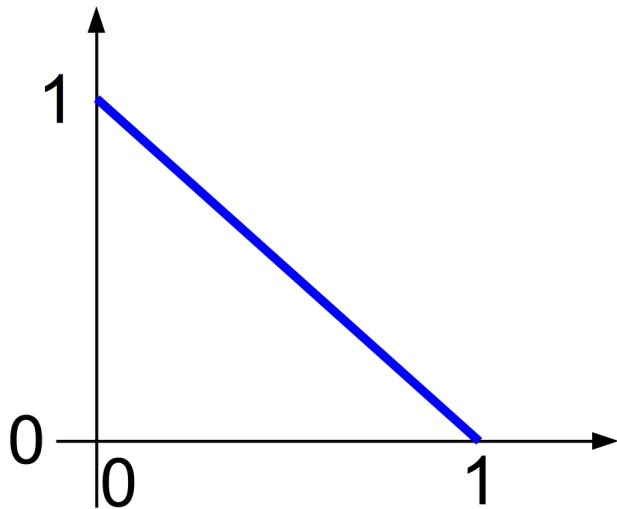
$$\int_0^L \begin{bmatrix} N_1 \\ N_2 \end{bmatrix} \frac{\partial}{\partial t} \left( [N_1 \quad N_2] \begin{bmatrix} T_1 \\ T_2 \end{bmatrix} \right) dx \\ - \int_0^L \begin{bmatrix} N_1 \\ N_2 \end{bmatrix} \frac{\partial}{\partial x} \left( \kappa(x) \frac{\partial}{\partial x} \left( [N_1 \quad N_2] \begin{bmatrix} T_1 \\ T_2 \end{bmatrix} \right) \right) dx - \int_0^L \begin{bmatrix} N_1 \\ N_2 \end{bmatrix} s(x) dx = \begin{bmatrix} 0 \\ 0 \end{bmatrix}$$

# Finite elements?

$T1.N1(x)$

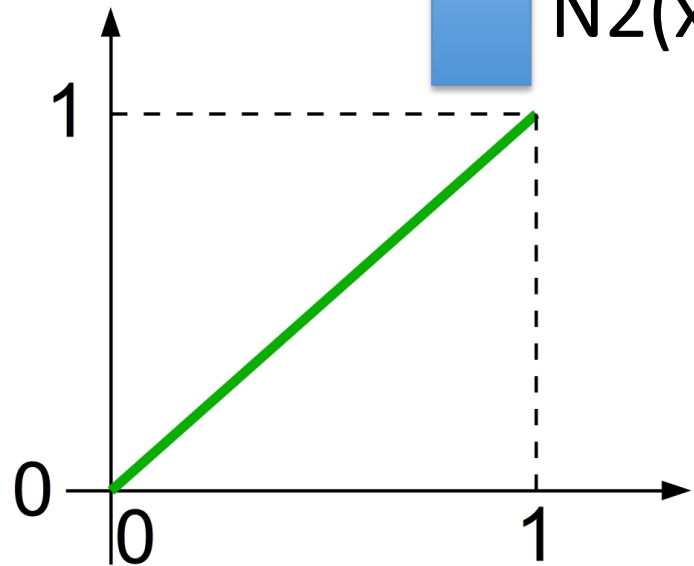


$N1(x)$



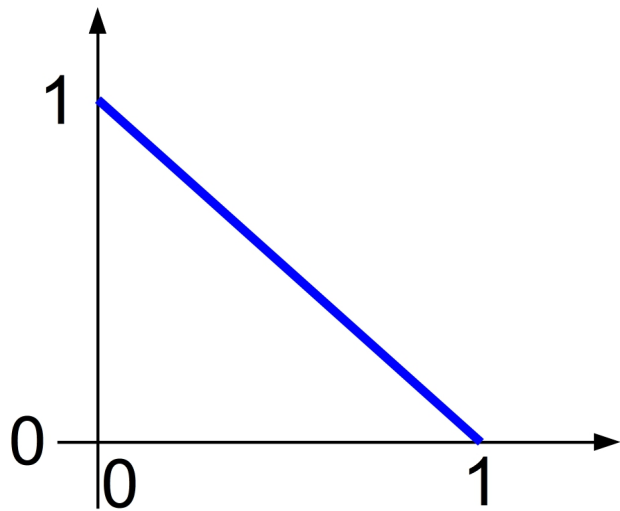
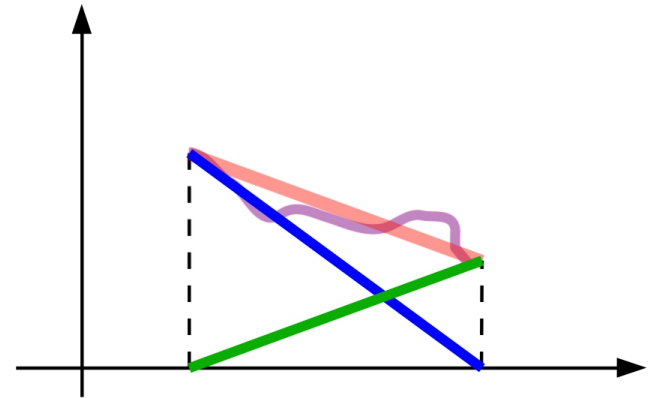
$T2.N2(x)$

$N2(x)$

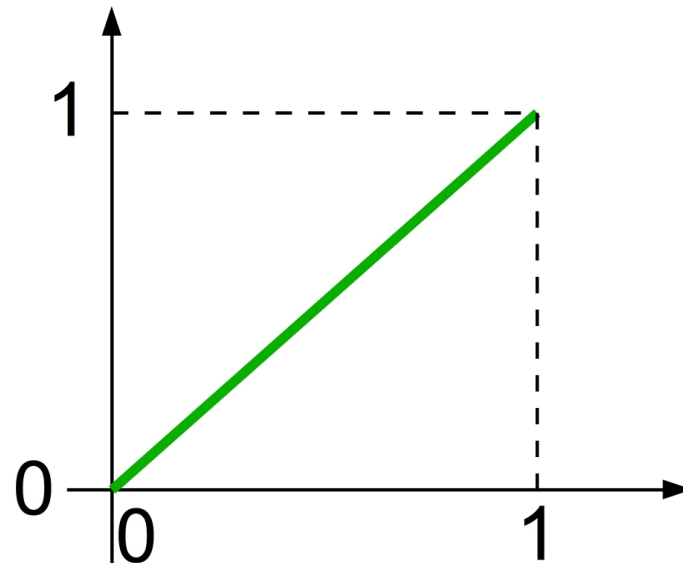


$$T(x) \approx N_1(x)T_1 + N_2(x)T_2$$

$$T(x) \approx [N_1(x) \quad N_2(x)] \begin{bmatrix} T_1 \\ T_2 \end{bmatrix} = \mathbf{N}\mathbf{T}$$



$$N_1(x) = 1 - \frac{x}{L},$$



$$N_2(x) = \frac{x}{L},$$

$$\int_0^L \begin{bmatrix} N_1 \\ N_2 \end{bmatrix} \frac{\partial}{\partial t} \left( \begin{bmatrix} N_1 & N_2 \end{bmatrix} \begin{bmatrix} T_1 \\ T_2 \end{bmatrix} \right) dx \\ - \int_0^L \begin{bmatrix} N_1 \\ N_2 \end{bmatrix} \frac{\partial}{\partial x} \left( \kappa(x) \frac{\partial}{\partial x} \left( \begin{bmatrix} N_1 & N_2 \end{bmatrix} \begin{bmatrix} T_1 \\ T_2 \end{bmatrix} \right) \right) dx - \int_0^L \begin{bmatrix} N_1 \\ N_2 \end{bmatrix} s(x) dx = \begin{bmatrix} 0 \\ 0 \end{bmatrix}$$

## Integration by part

$$\int_{\Omega} N_i \frac{\partial}{\partial x} \left( \kappa(x) \frac{\partial N_j}{\partial x} \right) dx = - \int_{\Omega} \kappa(x) \frac{\partial N_i}{\partial x} \frac{\partial N_j}{\partial x} dx + \kappa(x) N_i \frac{\partial N_j}{\partial x} \Big|_{x_A}^{x_B}$$

## Local matrix

$$\begin{bmatrix} \int_0^L N_1 N_1 dx & \int_0^L N_1 N_2 dx \\ \int_0^L N_2 N_1 dx & \int_0^L N_2 N_2 dx \end{bmatrix} \frac{\partial}{\partial t} \begin{bmatrix} T_1 \\ T_2 \end{bmatrix} \\ + \bar{\kappa} \begin{bmatrix} \int_0^L \frac{\partial N_1}{\partial x} \frac{\partial N_1}{\partial x} dx & \int_0^L \frac{\partial N_1}{\partial x} \frac{\partial N_2}{\partial x} dx \\ \int_0^L \frac{\partial N_2}{\partial x} \frac{\partial N_1}{\partial x} dx & \int_0^L \frac{\partial N_2}{\partial x} \frac{\partial N_2}{\partial x} dx \end{bmatrix} \begin{bmatrix} T_1 \\ T_2 \end{bmatrix} \\ - \bar{s} \begin{bmatrix} \int_0^L N_1 dx \\ \int_0^L N_2 dx \end{bmatrix} - \begin{bmatrix} N_1 q_A \Big|_{x_A} \\ N_2 q_B \Big|_{x_B} \end{bmatrix} = \begin{bmatrix} 0 \\ 0 \end{bmatrix}$$

$$\begin{bmatrix} \frac{L}{3} & \frac{L}{6} \\ \frac{L}{6} & \frac{L}{3} \end{bmatrix} \frac{\partial}{\partial t} \begin{bmatrix} T_1 \\ T_2 \end{bmatrix} + \bar{\kappa} \begin{bmatrix} \frac{1}{L} & -\frac{1}{L} \\ -\frac{1}{L} & \frac{1}{L} \end{bmatrix} \begin{bmatrix} T_1 \\ T_2 \end{bmatrix} - \bar{s} \begin{bmatrix} \frac{L}{2} \\ \frac{L}{2} \end{bmatrix} - \begin{bmatrix} N_1 q_A|_{x_A} \\ N_2 q_B|_{x_B} \end{bmatrix} = \begin{bmatrix} 0 \\ 0 \end{bmatrix}$$

$$\mathbf{M} \left( \frac{\partial \mathbf{T}}{\partial t} \right) + \mathbf{K} \mathbf{T} = \mathbf{F}$$

$$\mathbf{L} \mathbf{T}^{n+1} = \mathbf{R} \mathbf{T}^n + \mathbf{F}$$

$$\mathbf{L} = \begin{bmatrix} \frac{L}{3\Delta t} + \frac{\bar{\kappa}}{L} & \frac{L}{6\Delta t} - \frac{\bar{\kappa}}{L} \\ \frac{L}{6\Delta t} - \frac{\bar{\kappa}}{L} & \frac{L}{3\Delta t} + \frac{\bar{\kappa}}{L} \end{bmatrix} \quad \mathbf{R} = \begin{bmatrix} \frac{L}{3\Delta t} & \frac{L}{6\Delta t} \\ \frac{L}{6\Delta t} & \frac{L}{3\Delta t} \end{bmatrix}$$



## Sum of local matrices -> global matrix

$$\begin{aligned}
 & \begin{bmatrix} L_{11} & L_{12} & 0 & 0 & 0 \\ L_{21} & L_{22} + L_{11} & L_{12} & 0 & 0 \\ 0 & L_{21} & L_{22} + L_{11} & L_{12} & 0 \\ 0 & 0 & L_{21} & L_{22} + L_{11} & L_{12} \\ 0 & 0 & 0 & L_{21} & L_{22} \end{bmatrix} \begin{bmatrix} T_1 \\ T_2 \\ T_3 \\ T_4 \\ T_5 \end{bmatrix}^{n+1} \\
 &= \begin{bmatrix} R_{11} & R_{12} & 0 & 0 & 0 \\ R_{21} & R_{22} + R_{11} & R_{12} & 0 & 0 \\ 0 & R_{21} & R_{22} + R_{11} & R_{12} & 0 \\ 0 & 0 & R_{21} & R_{22} + R_{11} & R_{12} \\ 0 & 0 & 0 & R_{21} & R_{22} \end{bmatrix} \begin{bmatrix} T_1 \\ T_2 \\ T_3 \\ T_4 \\ T_5 \end{bmatrix}^n \\
 & \quad + sL \begin{bmatrix} \frac{1}{2} \\ 1 \\ 1 \\ 1 \\ \frac{1}{2} \end{bmatrix} + \begin{bmatrix} q_A \\ 0 \\ 0 \\ 0 \\ q_B \end{bmatrix}
 \end{aligned}$$

# Global matrices

$$\mathbf{L}_G \mathbf{T}^{n+1} = \mathbf{R}_G \mathbf{T}^n + \mathbf{F}_G$$

$$\mathbf{L}_G \mathbf{T}^{n+1} = \mathbf{b}$$

$$\mathbf{T}^{n+1} = \mathbf{L}_G^{-1} \mathbf{b}$$

# Numerical integration

$$\int_a^b f(\xi) d\xi \approx \sum_{i=1}^n f(\xi_i) w_i$$

# Numerical integration

$$\int_a^b f(\xi) d\xi \approx \sum_{i=1}^n f(\xi_i) w_i$$

$n$	$\xi_i$	$w_i$	$k$
1	0.0	2.0	1
2	$\pm\sqrt{\frac{1}{3}}$	1.0	3

# Numerical integration

$$\int_a^b f(\xi) d\xi \approx \sum_{i=1}^n f(\xi_i) w_i$$

$n$	$\xi_i$	$w_i$	$k$
1	0.0	2.0	1
2	$\pm\sqrt{\frac{1}{3}}$	1.0	3

$$\int_0^L N_1(x) N_1(x) dx = \int_{-1}^1 N_1(\xi) N_1(\xi) \frac{L}{2} d\xi$$

# Numerical integration

$$\int_a^b f(\xi) d\xi \approx \sum_{i=1}^n f(\xi_i) w_i$$

$n$	$\xi_i$	$w_i$	$k$
1	0.0	2.0	1
2	$\pm\sqrt{1/3}$	1.0	3

$$\begin{aligned} \int_0^L N_1(x) N_1(x) dx &= \int_{-1}^1 N_1(\xi) N_1(\xi) \frac{L}{2} d\xi \\ &\approx N_1\left(-\sqrt{1/3}\right) N_1\left(-\sqrt{1/3}\right) \times \frac{L}{2} \times 1.0 \\ &\quad + N_1\left(\sqrt{1/3}\right) N_1\left(\sqrt{1/3}\right) \times \frac{L}{2} \times 1.0 \end{aligned}$$

# Numerical integration

$$\int_a^b f(\xi) d\xi \approx \sum_{i=1}^n f(\xi_i) w_i$$

$n$	$\xi_i$	$w_i$	$k$
1	0.0	2.0	1
2	$\pm\sqrt{1/3}$	1.0	3

$$\begin{aligned}\int_0^L N_1(x) N_1(x) dx &= \int_{-1}^1 N_1(\xi) N_1(\xi) \frac{L}{2} d\xi \\ &\approx N_1\left(-\sqrt{1/3}\right) N_1\left(-\sqrt{1/3}\right) \times \frac{L}{2} \times 1.0 \\ &\quad + N_1\left(\sqrt{1/3}\right) N_1\left(\sqrt{1/3}\right) \times \frac{L}{2} \times 1.0 \\ &= \frac{L}{2} (0.6220084681 \times 1.0 + 0.04465819869 \times 1.0) \\ &= 0.333L,\end{aligned}$$