

Arcegno – Verzasca – Bellinzona 20/07/2016 (?)

PRELIMINARY PROGRAM



Map of the field trip area with locations of the stops.

STOP 1: Arcegno (ca. 3 hours)

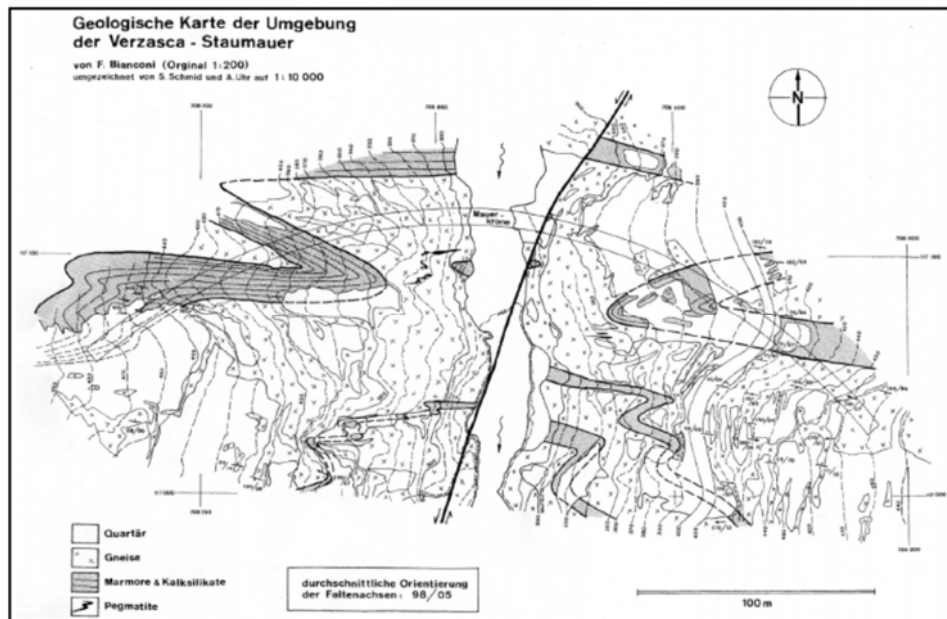
S-N cross section from the Permian mafic complex of the Ivrea-Verbano Zone (IVZ) to the middle Penninic orthogneisses of the Monte Rosa nappe: mafic granulites (IVZ) – gneisses and mylonitic gneisses of the Sesia Zone – metacarbonates of the Canavese Zone – mafic and ultramafic lenses (Zermatt – Saas Fee zone) – orthogneisses of the Monte Rosa nappe. Emphasis will be put on the deformational features produced by the Insubric line: mylonite, folds, paeudotachyllite, shear bands and more.

STOP 2: Lavertezzo (Lunch + ca. 1.5 hours)

Lunch. Strongly folded paragneisses and orthogneisses of the central Alpine Simano nappe. Spectacular interference structures between folds, ductile shear zones, lobate-cusped structures, folded and boudinaged aplite and pegmatite dykes and more and more.

STOP 3: Verzasca “James Bond” dam (30 minutes)

From the dam you can see banded and strongly folded paragneisses and metacarbonates of the Simano nappe. Fold amplitude is up to ca. 30 m. The fold plane is almost parallel to the dam, while the fold axes is nearly horizontal and EW-oriented.



Geological map around the Verzasca dam (after Bianconi).

STOP 4: Bellinzona (1 hour + Aperó)

Migmatitic paragneisses and micaschists of the Southern Steep Belt (Bellinzona-Dascio zone) and amphibolites outcropping directly at the Bellinzona castle. Migmatization, relationship between migmatization and deformation, melt-filled shear zones (?).